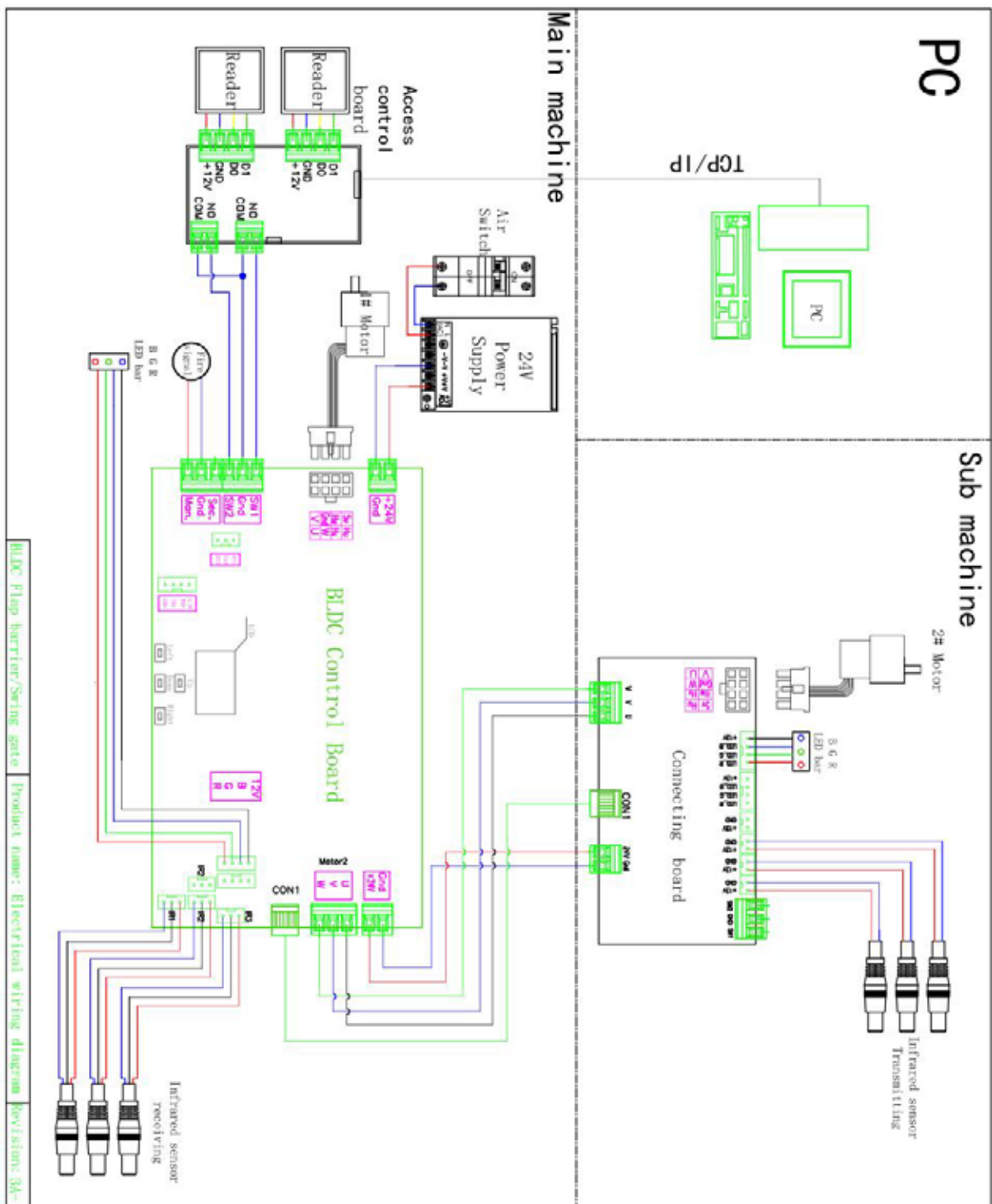


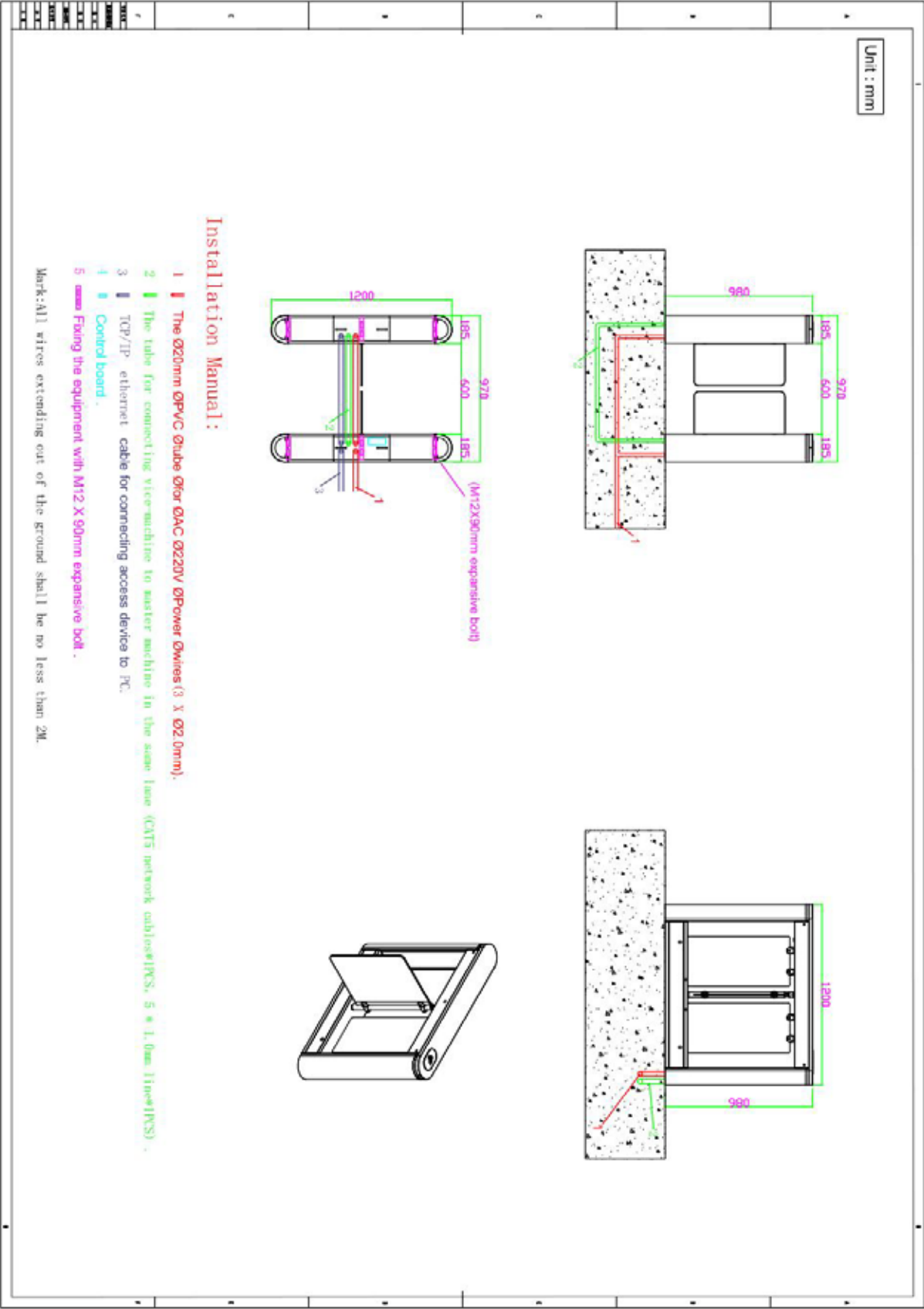
SB-ES-3216

SWING BARRIER

1. Wiring diagram



2. PVC Pipe Wiring Diagram



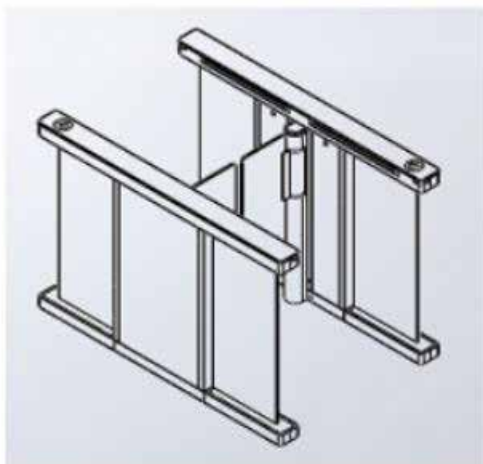
3. Installation notes

- ❖ Please read this manual carefully before install it;
- ❖ The gates must be correctly arranged in order, and the left and right gates of each lane should be aligned;
- ❖ If the equipment is used outdoors, equipment should be installed at the establishment of 100-200mm high cement platform, so as to prevent moisture, and install ceilings and other sunscreen, rain protection facilities;
- ❖ Protective earth wire must be connected;
- ❖ Please confirm each RJ45 cable straight through;
- ❖ Please check all wires has been properly connected before power on;
- ❖ Please test all function before using.

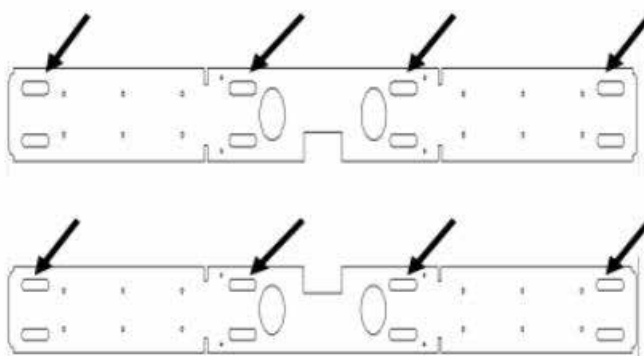
4. Turnstile Installation

Put the turnstile in order and alignment. We have mark on the turnstile for the multichannel, please install the turnstile in order. Such as A1-A2-A3-A4 on one side, a1-a2-a3-a4 on the other side.

Mark the fixing position of expansion bolts according to fixing plate on the bottom of each turnstile. Move turnstile and drill hole by impact drill, fix M12 expansion screws.



Install expansion
screws position



5. Turnstile Connection

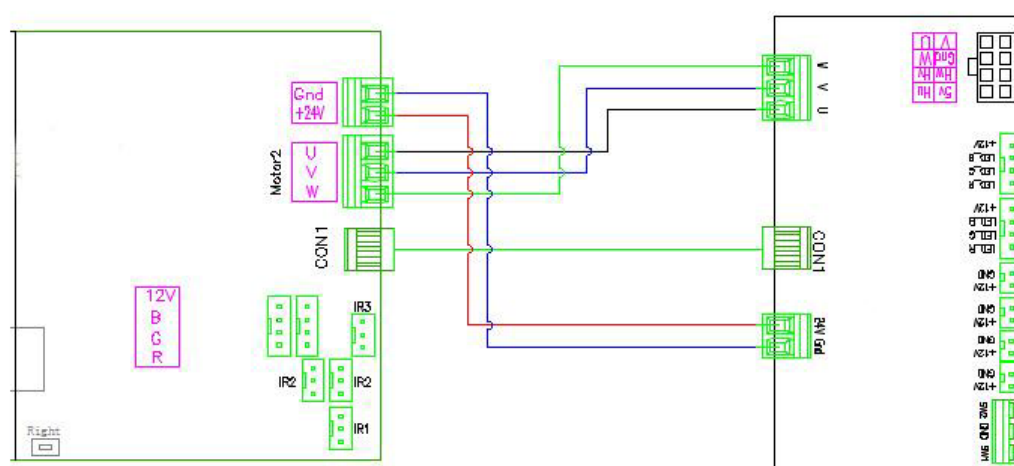
1) Connect wires between master and vice machine:

① Five-core power cord ($5 \times 1.0\text{mm}^2$) * 1 PCS

② CAT5e network cable * 1 PCS

CON1—CON1

Refer to the following picture.



① master machine control board

② vice machine board

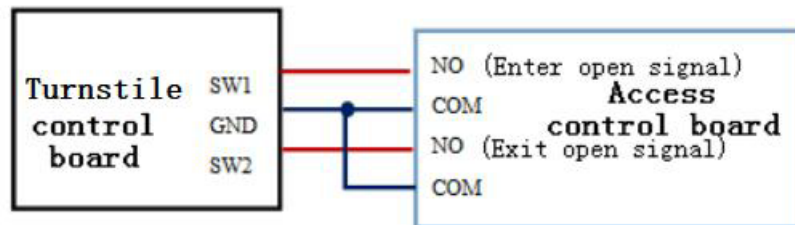
2) Connecting AC 220V power input

Connect the mater machie switch mode power supply to 220V and connect

the protective ground wire.

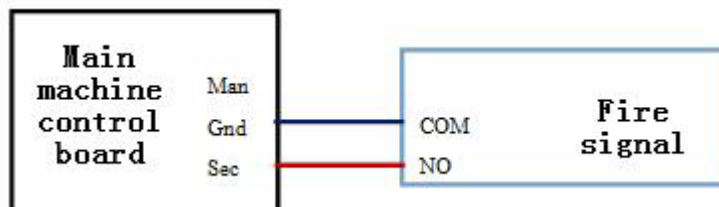
3) Access control device connect

Access control device send open signal to turnstile control board , turnstile will open immediately. Please set access controller relay output time to 1 second.



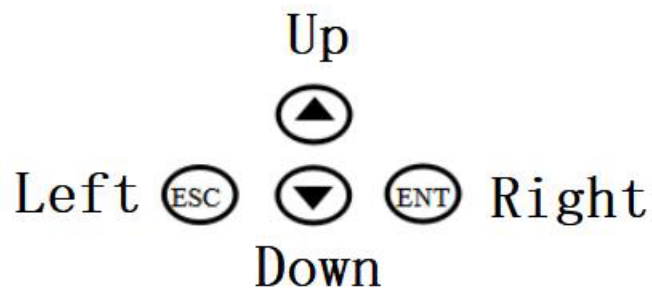
Note: It is strictly forbidden for the access control equipment to take power directly from turnstile control board.

4) Fire signal connect



[Sec Gnd] port short circuit for normally open, close immediately when cancel.

6. Controller Parameter Setting



【Four buttons】 : Up, Down, Left, Right

Up and Down for switch, Left for previous menu, Right for sub-menu.

【Enter menu】 :

Long press "Right" button 3 seconds unlock into menu.

【Enter advanced parameters menu & factory test menu】 :

Long press "Down + Right" button 3 seconds unlock into the menu.

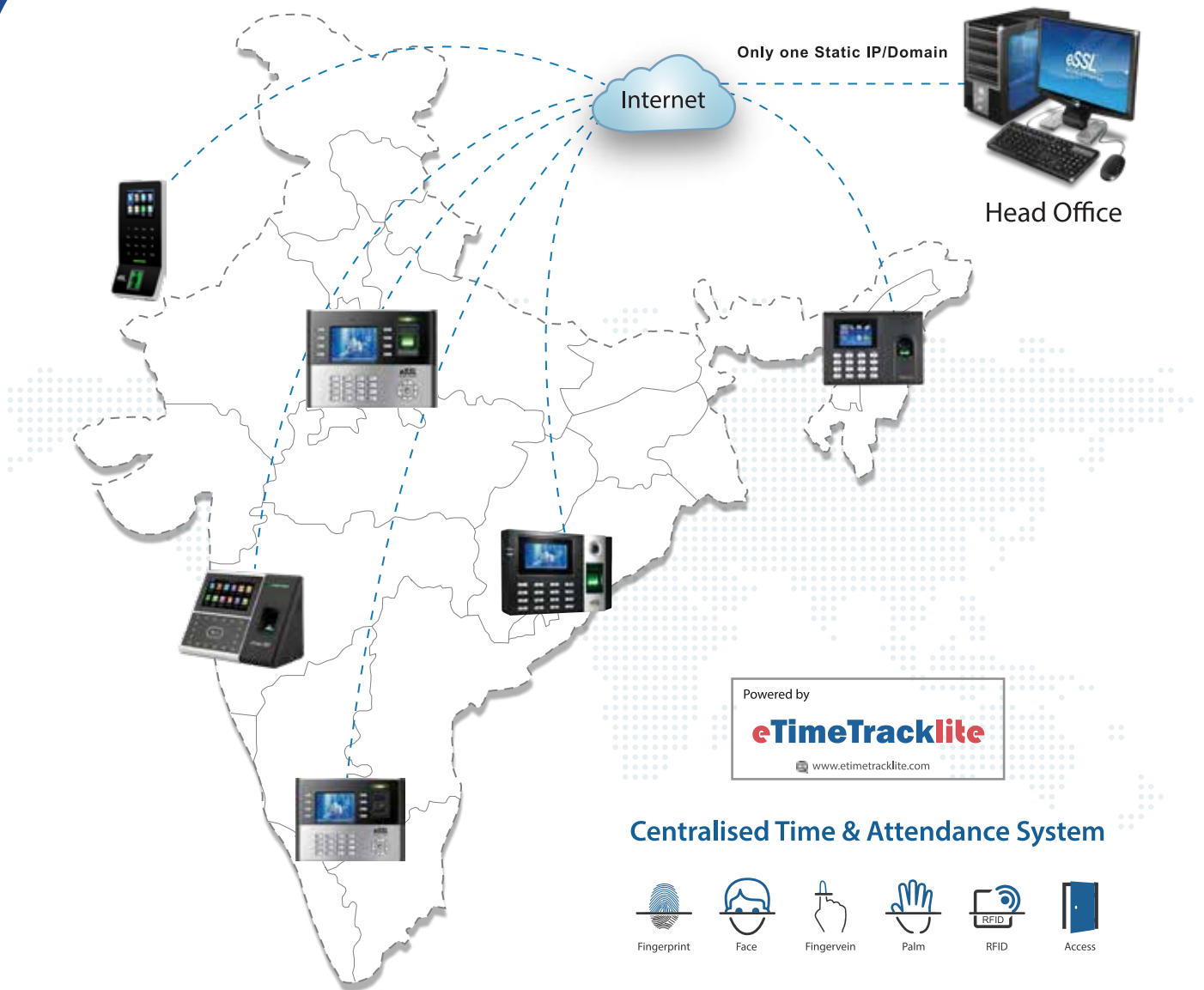
2.Menu setting

Item	Explain
1. Parameters	
1.1 Counter	Display pass through count
1.2 Gate Mode	Set gate mode(NO, NC and card, free or reject) of enter and exit: 1.NC, Both Card (default) 2.NC, Both Free 3.NC, Both Reject 4.NC, In Card Out Free 5.NC, In Card Out Reject 6.NC, In Free Out Card 7.NC, In Free Out Reject 8.NC, In Reject Out Free 9.NC, In Reject Out Card 10.NO, Both Free 11.NO, Both Card 12.NO, In Free Out Card 13.NO, In Card Out Free
1.3 Pass Time Out	Set maximum waiting time 10-255, unit 0.1s, (default 5 seconds)
1.4 Memory	Set scan card with memory mode:

	1. Both disable(default), 2. Entry allow, 3. Exit allow, 4. Both allow
1.5 Read In Lane	Set can scan card after entry lane, please do not modify: 1. not allow (default), 2. allowed
1.6 Open Delay	Set authorized open door delay 0-255, unit 0.1s, (default 0)
1.7 Close Delay	Set close door delay after passage finish 0-255, unit 0.1s, (default 0)
1.8 MIN Speed 1.	Set master machine power-on self-check speed, the smaller the value, the slower the speed.
1.9 MAX Speed 1.	Set master machine opening and closing speed, the higher the value, the faster the speed.
1.10 MIN Speed 2.	Set vice machine power-on self-check speed, the smaller the value, the slower the speed.
1.11 MAX Speed 2.	Set vice machine opening and closing speed, the higher the value, the faster the speed.
1.12 Pass End	Set IR Check passage end position: 1.exit (default), 2.safety
1.13 Intrude Set	Set Intrude Alarm Mode: 1.None, 2.alarm(default), 3.alarm and close
1.14 Reverse Set.	Set Passage From Reverse Alarm Mode: 1.None, 2.alarm(default), 3.alarm and close
1.15 Tail-Gating	Set Tail-Gating Alarm Mode: 1.None, 2.alarm(default), 3.alarm and close
1.16 Entry-Voice	
1.17 Exit-Voice	
1.18 Alarm-Voice	
1.19 Adv. Param.	Advance parameters
.1 Gearbox_RR	Set motor reduction ratio (1-120)
.2 KP1	
.3 KP2	
.4 Motor Pro.	Set the motor over current protection threshold, the default 2.0A
.5 Entry Angl 1	Set master machine the door opening angle for Entry
.6 Exit Angle 1	Set master machine the door opening angle for Exit
.7 Entry Angl 2	Set vice machine the door opening angle for Entry
.8 Exit Angle 2	Set vice machine the door opening angle for Exit
.9 Cushion Entry 1	Set master machine door closing limit buffer for Entry
.10 Cushion Exit 1	Set master machine door closing limit buffer for Exit
.11 Cushion Entry 2	Set vice machine door closing limit buffer for Entry
.12 Cushion Exit 2	Set vice machine door closing limit buffer for Exit
.13 Antagonism	In standby mode, the resistance to push the swing arm of the turnstile (no clutch mode)
.14 Output Test 1	Master machine angle value, Hall value position display

.15 Output Test 2	Vice machine angle value, Hall value position display
.16 Lock Open	Set clutch: 1.Not Allow, 2.Allowed
.17 Save Factory Settings	Save the current parameter to factory default: 1) OK 2) Cancel
.18 Auto Report	Set automatic report gate status when on change: 1) Disabled (default), 2) Enabled
.19 Motor Direction 1	Set direction of main motor rotation: 1. DIR_ON, 2. DIR_REV
.20 Motor Direction 2	Set direction of vice motor rotation: 1. DIR_ON, 2. DIR_REV
.21 Motor Type	Set motor type: 1. Motor1, 2. Motor2
.22 LED Mode	Set LED indicator default parameter: 1.Static LED, 2.Square LED
.23 Relay Mode	Set add relay use for passed counter : 1.Disabled (default), 2.Enabled
.24 Set Device Type	Set controller device type: 1. Swing Barrier, 2. Flap Barrier, 3. Tripod turnstile
2. System Set	
2.1 Language	Set Menu Display Language
2.2 Device Type	Display Controller Device Type
2.3 Version	Display hardware and firmware version information
2.4 Set Address	Set Device Logic Address
2.5 RS485 Baud	Set the baud rate of the RS485
2.6 Reset	Reset all setting to factory default
2.7 Restart	Restart controller
3. Factory Test	
3.1 Cycle Test	Open and close door cycle test
3.2 Set Zero	Swing gate use, set the baffle closed position

Manage Time & Attendance for all your Branches from Head Office



Disclaimer : Specifications can be changed without prior notice.

1. Buying and Selling eSSL products online is prohibited and is termed as illegal
2. Installation / Technical support / Training to end user is the responsibility of the installer or dealer
3. eSSL do not support end user directly, if they want support charges will be applicable



Enterprise Software Solutions Lab Pvt. Ltd. (Corporate-Office)

#24, 23rd main, Shambhavi Building, J P nagar 2nd phase, Bengaluru - 560078

www.esslsecurity.com | sales@esslsecurity.com | Ph : 91-8026090500